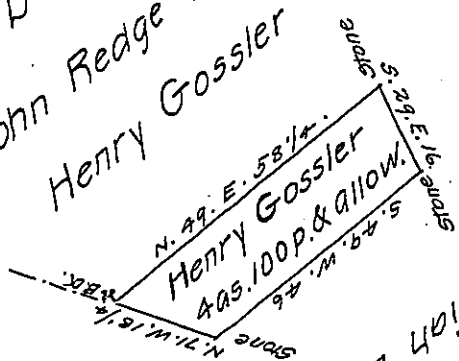


D-46-273  
John Redge late  
Henry Gossler



Peter Hushour  
C-220-150

Jeremiah Burkhat  
L21-L-2

Situate, in Gumru Township Berks County, Containing Four  
 acres, one hundred perches & the allowance of six per Cent for roads  
 &c. part of a larger tract of Twenty five Acres & all surveyed to  
 Henry Gossler in pursuance of an application No. 3184, dated the 31st March  
 1768, surveyed & divided for Henry Weaver the 15th. March 1814.

pr John M. Hyneman D.S.

To Rich<sup>d</sup> T. Leech Esqr }  
 Sur. Genl Penn<sup>a</sup> }

IN TESTIMONY that the above is a copy of the original remaining on file in  
 the Department of Internal Affairs of Pennsylvania, made  
 conformably to an Act of Assembly approved the 16th day of  
 February 1833, I have hereunto set my hand and caused  
 the Seal of said Department to be affixed at Harrisburg,  
 this twenty-third day of April 1907

*Isaac D. Brown*  
 Secretary of Internal Affairs.